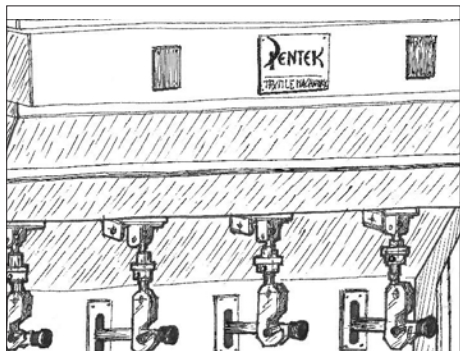


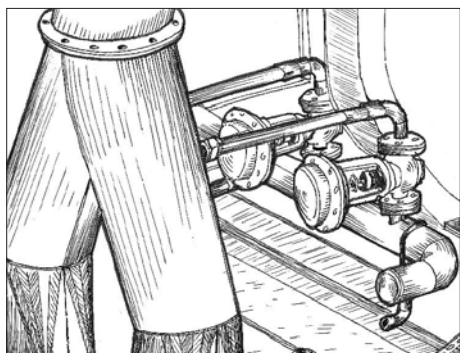
SIEMENS TOUCH SCREEN

Siemens touch screen panel in profibus connection with the main drives of the electrical panel, allows a total control of the whole unit management, even remotely, for monitoring consumption, efficiency and recipes in real time. The storage and recall of processing recipes, with all functional parameters, ensures uniform results over the time and regardless the operator skills and knowledge of the processes.



AUTOMATIC STORAGE MANAGEMENT

For particularly delicate and sensitive fabrics, we can optionally supply FlyAIR with an automatic fabric storage management without the risk of tension and friction on the fabric. The software is responsible for automatic adjustment of any change in weight and volume of the fabrics by increasing or decreasing the sensitivity of the load cells in each of the vats, during the alternated motion of the fabric.



STEAMING AND COOLING

FlyAIR 8 (8 vats and 4 ejector pipes) is equipped with two separate fans (with 2 ejectors each) and to manage the operating temperatures separately. In this way we will be able to carry out a steaming (direct steam injection into the air flow) in the first two channels and dry in the following two channels with higher ventilation power and temperatures. At the exit, it is possible to equip the system with a forced cooling device that allows any thermo-sensitive fabrics to be deposited at the right temperature to avoid undesired crease marks.

pentek.it



FLYAIR

FASTEN YOUR SEAT BELTS!



FlyAIR is the ultimate solution for continuous tumbling adding the typical mechanical action of rope form along with longer dwell times.

After thirty years tradition on discontinuous rope form tumblers, today no more fabric cutting, loading and unloading, stitching and unstitching.

The intense mechanical action of the rope form action determines a characteristic movy look and a particular drape, totally different from the open width tumbling.

Long dwell times enable the goods to keep tumbling from 20 up to 40 min, compared to the usual 4-8 min permanence in an open width tumbler.

FlyAIR effectively unlocks new solutions in finishing and answers a long terms request for industrial and continuous tumbling.

Welcome to the new era of rope form tumbling!



THE ADVANTAGES OF ROPE FORM

Compared to the continuous open width process, FlyAIR allows a much more intense action, thanks to two key factors: the rope form and the dwell time. The mechanical action of the rope is much more energetic than in open width and the dwell time (from 20 to 40 min) allows effects otherwise impossible in open width. FlyAIR actually extends the possibilities of a continuous process to items that are currently impossible to run in continuous open width tumblers.

VERSATILITY: FLYAIR 4 AND FLYAIR 8

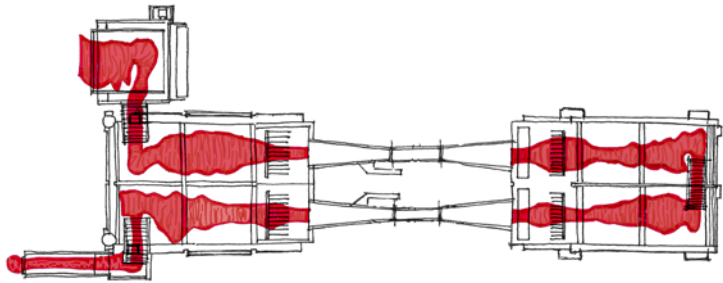
FlyAIR line counts on two models, with 2 pipes and 4 vats (FlyAIR 4) and with 4 pipes and 8 vats (FlyAIR 8). FlyAIR 8 is equipped with two ventilators and two separate heating systems to operate processes that require different steps within the same process. Furthermore, the availability of different ventilation power on both models allows you to adapt FlyAIR to your needs.

PAD MANGLE AND DETWISTER IN LINE

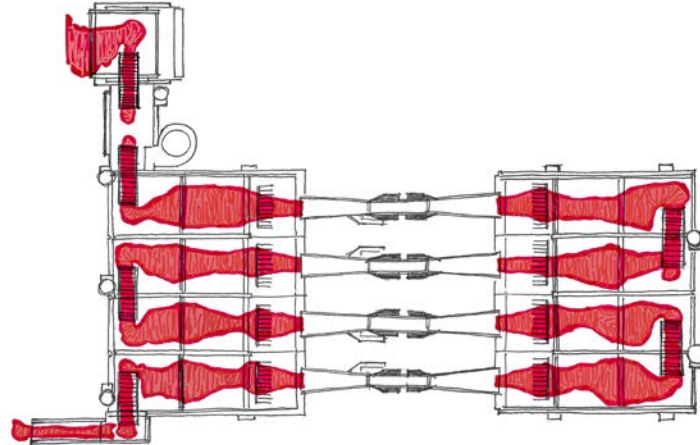
The unit is equipped with a totally automatic process control; the synchronism with a padder on entry and a detwister on exit allows smooth and continuously repeatable processes, almost without manpower. FlyAIR is designed to fit in finishing lines that can be easily managed with automation: a single operator can manage up to two processing lines without any difficulty.



FLYAIR 4 TOP VIEW

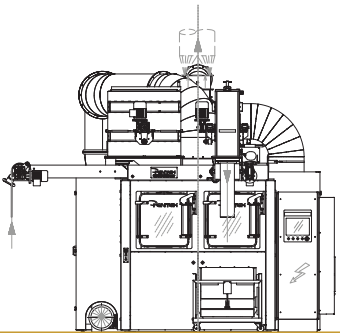


FLYAIR 8 TOP VIEW

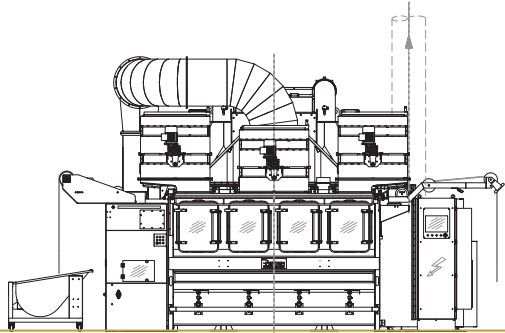


DATA SHEET

	FLYAIR 4	FLYAIR 8
Production Speed:	10-25 m/min	12-45 m/min
Fabric Range:	Da 50 a 500 gsm	Da 50 a 500 gsm
Vats and Pipes Numbers::	4 vats, 2 venturi pipes	8 vats, 4 venturi pipes
Maximum Evaporation:	350 kg/h H ₂ O	700 kg/h H ₂ O
Alternative Air Heating System:	Gas, Steam o Thermal Oil	Gas, Steam o Thermal Oil
Installed Thermal Power:	450 kW – 387.000 Kcal/h	2 x 450 kW – 387.000 Kcal/h
Air Maximum Temperature:	170° C (gas)	170° C (gas)
Gas line:	1", Min 100-MAX 250 mbar	2 x 1", Min 100-MAX 250 mbar
Average Gas Consumption:	18 m3/h	34 m3/h
Compressed Air Line:	½"- 6 bar	½"- 6 bar
Installed Electrical Power	93 kW	158 kW
Average Electrical Consumption:	45 kW	75 kW
Size (in mm):	10090 x 3760 x 3779	8646 x 6774 x 3937
Weight:	9.860 kg	13.800 kg



FLYAIR 4



FLYAIR 8

APPLICATIONS:

After printing

Effective for all types of printing, both digital and rotary: reactive, disperse and acid prints. Ideal for knitted pigments and rotary prints in general with extremely high production speeds.

Added value goods

Thanks to the intense mechanical action, FlyAIR is also warmly suggested for high value-added cellulase items: lyocell, cupro and blends to enhance the peach skin feel, both on woven and knitwear. Great effect also on resinated Tencel knits.

Lamb skin look on polyester polar fleece

Thanks to FlyAIR 8, you can finally get a lamb skin look in continuous, by duplicating the 3 steps normally carried out in discontinuous rotary drum tumblers: steaming + drying + cooling. FlyAIR is the first and only equipment worldwide to enable lamb skin look in a continuous and reliable industrial way.